

# SPECIAL WASTE CONTAINERS TYPE SAF



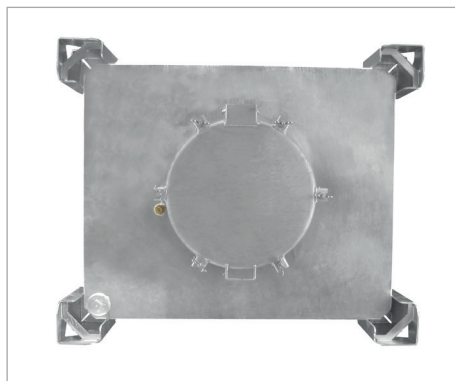
SAF 1000

**For the international transport of hazardous liquids according to ADR/RID and the IMDG code, packing groups II and III**

- according to DIN standard 30741, part 2
- sturdy construction made of 3 mm steel sheet
- fill opening Ø 457 mm with lockable dome cover
- dome cover, either centered or off-centre
- pressure relief valve 3/4", 0.5 bar
- 2" coupling with plug
- suitable for pick-up by a pallet truck, forklift or crane
- max. density 1.5 kg/l

### Accessories

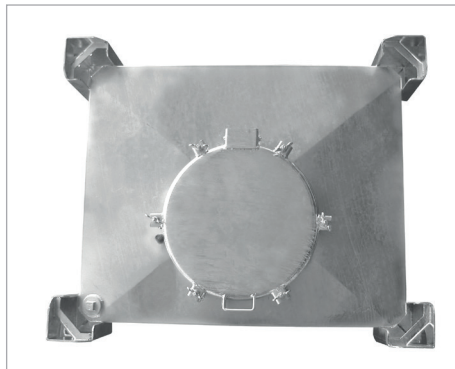
- funnel with stainless steel sieve
- embossed company name
- wing nut wrench



Centered dome



SAF 450



Off-centre dome cover



Funnel with stainless steel sieve (accessory)





Wing nut wrench (accessory)



SAF with Sump Tray type AW 1000 (please refer to page 106)

	Volume in l	Dimensions (l x w x h) in mm	Can be stacked	Total permitted weight in kg	Weight in kg
SAF 450	450	1200 x 1000 x 815	3 high	848	173
SAF 600	600	1200 x 1000 x 975	3 high	1092	192
SAF 1000	1000	1200 x 1000 x 1400	3 high	1759	223

**Finish:** hot-dip galvanized

**UN-APPROVALS**  
 **31A/Y/D/BAM 0151-BAUER/3585/**  
 **31A/Y/D/BAM 7338-BAUER/3585/**