

GROUND PROTECTION SPILL TRAY FOR USE UNDER MACHINES **BSW**



For use under machines, bespoke design, according to the customer's specification



- every unit tested for leakage
- flammable liquids, GHS categories 1 - 3
- hazardous to aquatic environment, GHS categories 1 - 4

GROUND PROTECTION FLOOR ELEMENTS



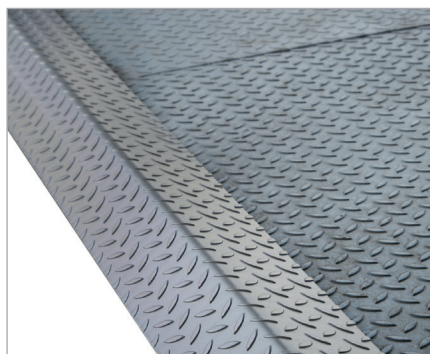
Ground protection floor elements with a recess for a column and with a threshold ramp

German legislation (VAwS and WHG) stipulates that facilities that handle waterpolluting substances i.e. loading or unloading operations etc. must be equipped with adequate containment protection. Ground Protection Floor Elements fulfil these requirements and also help prevent mechanical damage to the floor.

- bespoke design to suit the location
- short lead times mean short downtimes
- steel or stainless steel elements
- various material strengths
- steel plates are welded together on site and fixed to the ground using dowels
- layed and fitted to a firm, level surface
- non-slip surface that can be walked on
- adequate load capacity for pallet trucks; suitably designed, floor elements can also be driven on by a truck or forklift

Accessories

- threshold ramps
- folded or curved thresholds that can be driven on
- drain channel with grate
- a layer of impact sound insulation material or thermal insulation material between the Ground Protection Floor Elements and the original floor surface
- metal skirting to connect to the wall
- emergency showers, exhaust systems
- grid gratings



Folded threshold, can be driven on



Drain channel with grate

Painted finish according to your choice from the RAL colour code chart