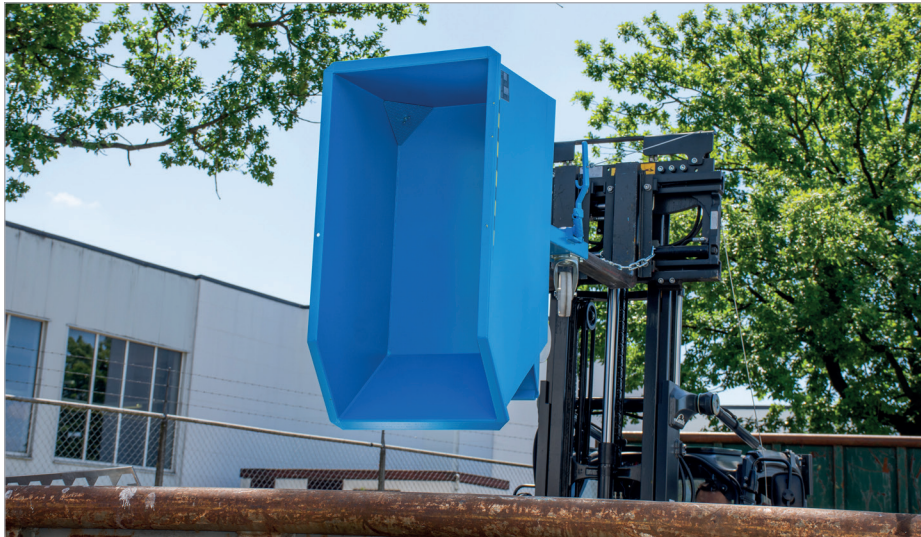


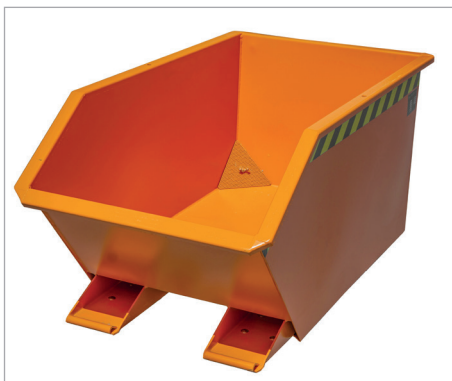
SWARF TILTING CONTAINERS TYPE GU-E / SMGU



GU-E with castors



GU-E



GU-E



SMGU

Especially designed to separate liquids from solids and collect them

- Perforated corner sieve and 1" drain-cock to drain off liquids
- can be emptied at any height by cable operated from the driver's seat
- body with all-round reinforced edging
- sturdy frame with fork sleeves
- can be secured to prevent slipping and unintentional emptying
- welding, oil and watertight

Types available

Swarf Container **GU-E**

- as above

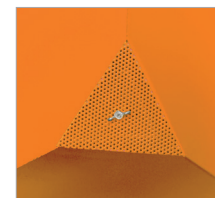
Mini Swarf Container **SMGU**

- extremely low construction height
- height dumping edge 350 mm

Accessories

- castors for GU-E: 2 swivel + 2 fixed polyamide castors Ø 180 mm, one swivel castor with brake – construction height 225 mm
- castors for SMGU: 2 swivel + 2 fixed polyamide castors Ø 100 mm, one swivel castor with brake – construction height 125 mm
- galvanized lid, can be opened from both sides
- pick-up for a crane, lever trolley or pallet truck
- trailer coupling and towing bar
- adjustable dumping brake (not for GU-E 300, SMGU 230)

Individual constructions on request



Perforated corner sieve



1" drain-cock

| | Volume (approx.) in m ³ | Dimensions (l x w x h) in mm | Load capacity in kg | Weight in kg paint. / galv. |
|-----------|---------------------------------------|---------------------------------|------------------------|--------------------------------|
| GU-E 300 | 0,30 | 1440 x 680 x 580 | 750 | 95 / 102 |
| GU-E 500 | 0,50 | 1440 x 780 x 680 | 1000 | 113 / 122 |
| GU-E 750 | 0,75 | 1440 x 1280 x 680 | 1000 | 141 / 152 |
| GU-E 1000 | 1,00 | 1640 x 1280 x 780 | 1500 | 186 / 204 |
| GU-E 1500 | 1,50 | 1640 x 1280 x 1090 | 1500 | 217 / 238 |
| GU-E 2000 | 2,00 | 1640 x 1680 x 1090 | 1500 | 246 / 270 |
| SMGU 230 | 0,23 | 1385 x 680 x 450 | 750 | 85 / 91 |
| SMGU 270 | 0,27 | 1385 x 780 x 450 | 1000 | 97 / 104 |
| SMGU 460 | 0,46 | 1385 x 1280 x 450 | 1000 | 121 / 130 |
| SMGU 610 | 0,61 | 1385 x 1680 x 450 | 1000 | 139 / 149 |

Fork sleeve inside dimensions in mm

| | A | B | C |
|------------------------------|-----|-----|----|
| GU-E 300 / SMGU 230 | 10 | 200 | 60 |
| GU-E 500 / SMGU 270 | 150 | 200 | 60 |
| GU-E 750-2000 / SMGU 460-610 | 495 | 200 | 60 |